

# SDF CHAIRSIDE GUIDE



For more information, please visit:  
Dr. Jeanette MacLean [www.kidsteethandbraces.com](http://www.kidsteethandbraces.com)

# SDF TREATMENT

Silver Diamine Fluoride (SDF) is a non-invasive treatment option for cavities, using a topical medicine that is painted on the tooth instead of a more invasive surgical (drill and fill) approach

## SDF Treated Incisors

Before



After



## SDF Treated Molar

Before



After



### Pros

- Quick, easy, painless
- Relieves sensitivity
- Remineralizes your natural tooth structure
- Prevents biofilm adhesion
- Avoid or delay more invasive restorations
- Arrests 80% of cavities when applied twice yearly

### Cons

- Permanently stains cavities black
- Cavities (holes) that trap food may still require a restoration
- Not an option for deep cavities
- 20% of cavities continue to grow
- SDF is a treatment for cavities, not a cure

\* Proper diet and oral hygiene, including daily flossing, are critical for long-term success

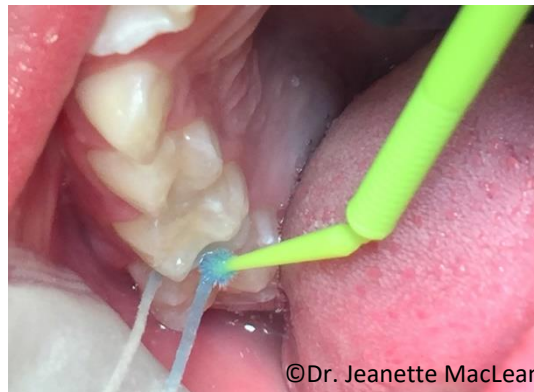


For more information, please visit:  
Dr. Jeanette MacLean [www.kidsteethandbraces.com](http://www.kidsteethandbraces.com)

# SDF + Floss Treatment

Silver Diamine Fluoride (SDF) is a topical antimicrobial and remineralizing non-invasive treatment option for interproximal lesions (decay between the teeth)

## SDF Application to Interproximal Surfaces with Spongy Floss



©Dr. Jeanette MacLean



©Dr. Jeanette MacLean

## Clinical Appearance of SDF Treated Small Interproximal Lesions



©Dr. Jeanette MacLean



©Dr. Jeanette MacLean

## Clinical Appearance of SDF Treated Extensive Interproximal Lesions



©Dr. Jeanette MacLean



©Dr. Jeanette MacLean

### Pros

- Quick, easy, and painless
- Non-invasive
- Remineralizes your natural tooth structure
- Prevents biofilm adhesion
- Arrests 80% of lesions when applied twice yearly
- Avoid or delay more invasive restorations

### Cons

- Permanently stains decay black
- 20% of lesions fail to arrest with SDF treatment alone
- Not an option for deep cavities
- Lesions between molars are the most likely to grow and may require a restoration

\* Proper diet and oral hygiene, including daily flossing, are critical for long-term success



# SMART Treatment

Silver Modified Atraumatic Restorative Treatment (SMART) is a minimally invasive treatment option for cavities treated by Silver Diamine Fluoride (SDF) using Glass Ionomer Cement (GIC)

## SMART Treated Incisors

Before



After



## SMART Treated Molar

Before



After



- |      |   |
|------|---|
| Pros | <ul style="list-style-type: none"><li>• Minimally invasive</li><li>• Aesthetic</li><li>• Durable</li><li>• Biocompatible</li></ul>  |
| Cons | <ul style="list-style-type: none"><li>• GIC alone may not mask the entire SDF black scar</li><li>• Larger lesions may require a full coverage restoration</li><li>• SMART is a treatment for cavities, not a cure</li></ul> |

\* Proper diet and oral hygiene, including daily flossing, are critical for long-term success